

HV JUICE



TUDS

IS NOW READY TO HIT THE

ROAD

PAGE 2



This Issue	
FIBREGLASS LADDERS FOR UTILITIES	PAGE 6
DC FLOODLIGHTS	PAGE 9
G&W SENSOR TECHNOLOGY	PAGE 10



**Customised
1000V VDE
Toolkits**
PAGE 3

www.transnet.co.nz

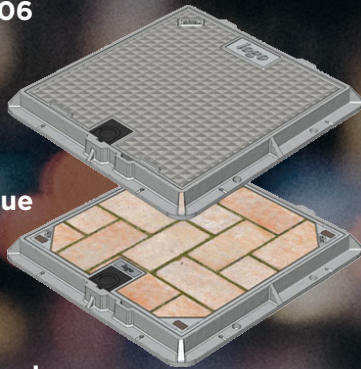


TUDS IS READY TO HIT THE ROAD

CLASS D ROADWAY RATING

SIKA CLASS D LID FEATURES

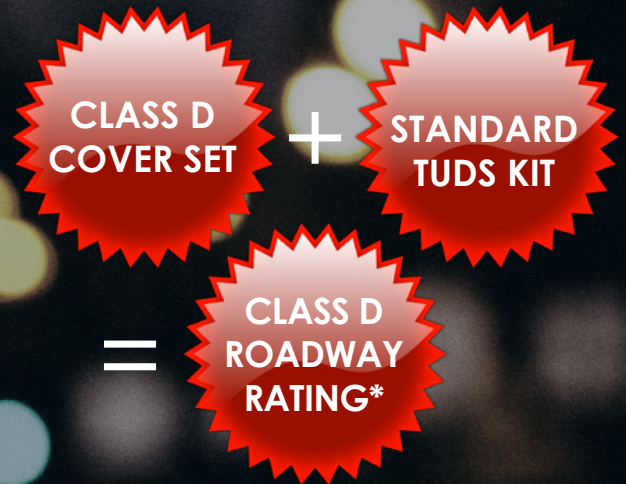
- V shaped seating between cover and frame to remove movement & noise issues
- Stainless Steel quarter turn spring loaded latch creates cover clamping force & is compliant to standards for IPD (Internal Pressure Dislodgement)
- Marine Grade, corrosion resistant materials
- 50 year warranty
- 100% recyclable cover set
- Aluminium access covers and frames (cover sets) are lightweight, strong and durable. They are compliant with loading and slip resistance standards in Australia/NZ & Europe
- Dimensions: 400 X 400mm
- Standard: AS 3996:2006
- Design Load: Class D 210kN (Roadway)
- Weight: 31kg
- Heaviest Part: 16.5kg
- Security: Bolting, Torque Coupling Required for Operation
- Surface Options: Solid or Infill
- Fits snugly over standard TUDS enclosures to make them Class D rated



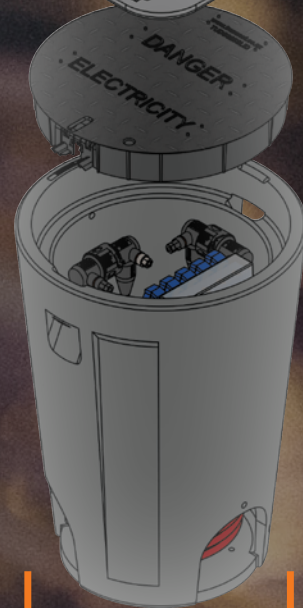
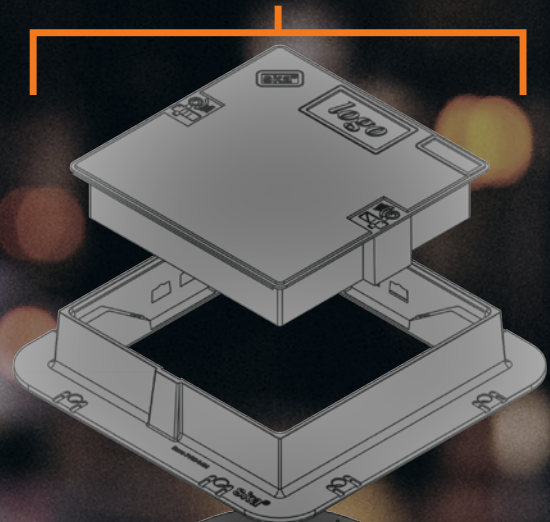
*Class D cover set must be installed to manufacturers guidelines to achieve desired rating

TUDS FEATURES

- Fast and simple to install
- Fully submersible fittings
- Fully recyclable enclosure materials
- Recycled material used in manufacture of enclosure
- Proven technology - in service for 20 years
- Increased reliability of the network due to protection gained from being flush mounted.
- Aesthetic benefits for the public
- Reduction in clutter on streets and footpaths



Class D Rated Cover Set



Standard TUDS Enclosure



UTILITY TOOLKITS

ORDER STANDARD OR CUSTOMISE WITH ADDED EXTRAS

- Use our standard tool lists as a base kit or build from scratch
- We can completely customise tool kits to your requirements
- Huge stock holding of tools
- Tool specialist on staff to assist with tool selection
- Talk to us about what you need
- Multiple storage options available



**CALL
US FOR
MORE
INFO**





WHAT MAKES RAYCHEM THE INDUSTRY LEADER?

TE Connectivity's high voltage link boxes HVLB provide a sealed and dry environment for high voltage cable sheath earthing connection. They reduce voltages and circulating currents.

TE offers three types of link boxes with different number of entries to bond the cable sheath to the ground:

- SVL: cable sheath earthed via a Sheath Voltage Limiter (SVL)
- GND: cable sheath earthed direct to the ground without a SVL
- CRO: cable sheaths are crossbonded

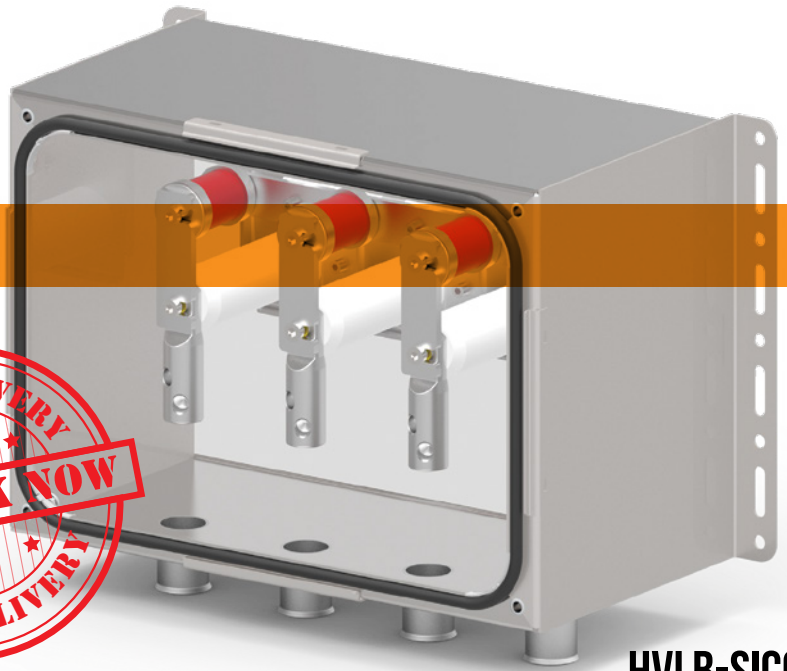
To get an easy access to the cable sheath for inspections, TE developed a reliable gasket-lid-system, which is tighter against water and dust. The lid system is equipped with a proof device for padlocks to prevent unauthorized access.

A well-arranged configuration ensures a higher reliability. Homogeneous distances between the electrical path, trustworthy electrical connections and a specially developed short-circuit-yoke allow a better impulse-voltage and short-circuit withstand. For safety in an unexpected case, our box is tested to absorb the power of an internal arc with 25 kA for 0.1 sec.

Customers can count on consistent, high quality products, driven by TE's proven innovation and backed by our extraordinary customer support.

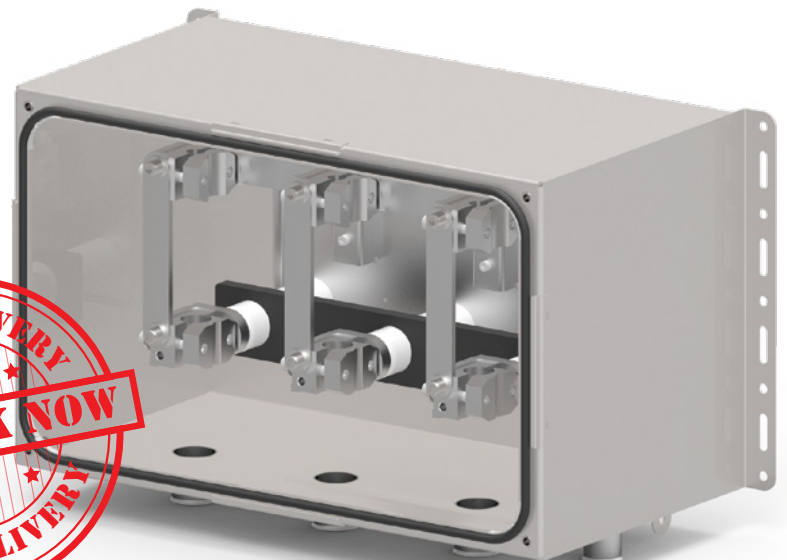
FEATURES & BENEFITS

- Impulse withstand: 65kV (HVLB-SICO)
75kV (HVLB-COAX)
- Short circuit current: 63 kA/1 s
- Internal power arc: 25 kA/0.1 s
- Tight against water and dust according to protection class IP688
- Gland sealing with WCSM heat shrinking tube
- Sequential serial number for each link box
- Technical support for installation



HVLB-SICO

CABLE SHEATH BONDING WITH SINGLE CORE CABLE



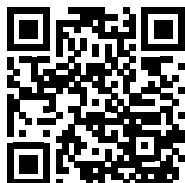
HVLB-COAX

CABLE SHEATH BONDING WITH CONCENTRIC CABLE



Technical Information

MATERIAL OF THE HOUSING	SS304 / X5CRNI17-10
SURFACE PAINTING	RAL7035, THICKNESS 0,08, FINE STRUCTURE OUTDOOR



VIEW DATASHEETS
FOR SELECTION OPTIONS





OUTSTANDING FLEXIBLE CONTROL OF LV NETWORKS



This true 3way link pillar is prominently applied in a 3 phase, 400 A, 50 Hz MEN (Multiple Earthed Neutral) distribution system. It can be used in residential or industrial applications to energise or isolate the customer's LV network, as well as supply multiple LV feeders in parallel.

This new 3way link pillar can be installed easier and faster than its predecessor, with less cable core bending needed for terminating into the double bolted terminals. Each main core is independently separated and insulated. No cross phasing is possible.

This fully insulated and touch-safe unit is independently tested to meet the requirements of utilities.

FEATURES AND BENEFITS

- 3x linked mains connections from 185mm² up to 300mm², accommodates Al or Cu round or sector cables
- 8 service ports per phase, 1x70mm² and 3x50mm² per each side of the unit
- Staggered main connections run vertically to minimize cable crossings
- Phases independently separated and insulated
- Easier, faster and safer to install and operate
- Fully insulated and touch safe system; no exposed live contacts
- Suitable for both Aluminum and Copper cables
- Ability to include additional service connections if required
- True 3way switching to energise or isolate LV mains, or to supply multiple LV feeders in parallel
- Tinned brass connections eliminate possibility of corrosion
- Complete with installation instruction, network and switching labels
- Proven and reliable dovetail connection; no specialized tooling is required
- Make / Break tested - 100 x 100 amps; then 10 x 400 amps
- Tested to 600 amps

Fits into ECOpillar EP6TALL for a compact yet accessible installation.

TE Connectivity's TAPPATLINK 3way open/switching point link pillar is designed to maximize flexibility when it comes to standard link and isolation procedures and load balancing. Customers can count on consistent, high quality products, driven by TE's proven innovation and backed by our extraordinary customer support.

- Safe and economical to install & operate
- Fully insulated and touch safe system
- Independently tested to meet the requirements of utilities

Learn more about the Tappat range of products at [te.com](https://www.te.com)





Little Giant Ladder Systems

The best lightweight fibreglass extension ladder in the world. Strong, 20% more rigid, and up to 600% more stable on uneven terrain (SumoStance).



MADE IN USA



STANDARD FEATURES

- Double pulley
- Side mounted rope
- Ground-Cue audible bottom rung
- Integrated side to side spirit level
- Integrated 4-in-1 incline level on side of ladder
- Up to 50mm wider climbing area
- Substantial space between rungs fit gloved hands
- Delivered inspected with inspection label and serial number
- Range of top fixings includes web strap, chain, or V-bar
- Sure-Set™ feet won't shift
- Meets all relevant sections of ANSI A14 and AS 1892.1:2018 standards*
- Meets requirements ANSI standard listed in Section 8 of NZ EEA Guide - Portable Equipment for Work on or Near Conductors
- 16'-32' models rated/ tested to 170kg*
- 36' & 40' models rated/ tested to 150kg*
- **SumoStance – Dual wide stance levellers increases stability by 600%

*Test reports available on request.



4-in-1 level



Safe Climbing Even with Gloves



Leveling Bubble

OPTIONS

- Tethering system - Specially designed Ladder Lock System enables lone workers to secure the head of their ladder before ascending
- Fall arrest system - ANSI Z359.15 rated, offers 100% fall protection on ascent and descent. Smooth hands-free tracking, allows for 3-point contact at all times
- Chain head strap
- Webbing head strap
- V-bar attachment



V-bar Attachment Strap Attachment Fall Arrest System



Chain Attachment Pole Tethering System

LADDER REPAIRS

TransNet NZ Limited is a Little Giant approved repair facility. Any repairs or modifications needed for your Little Giant ladders can be done right here in our authorised repair workshop.

SERVICE ASSURANCE

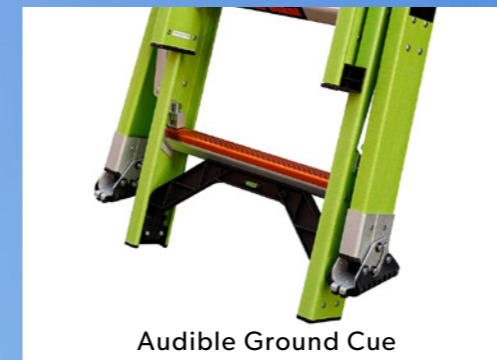
- Spare parts held in stock
- Dedicated workshop with fast, efficient turn around on ladder repairs and upgrades
- Custom inclusions can be fitted at time of order
- All ladders are inspected by our in house Test Department before they are dispatched
- Routine periodic inspection service available

REPAIR/REPLACEMENT OF

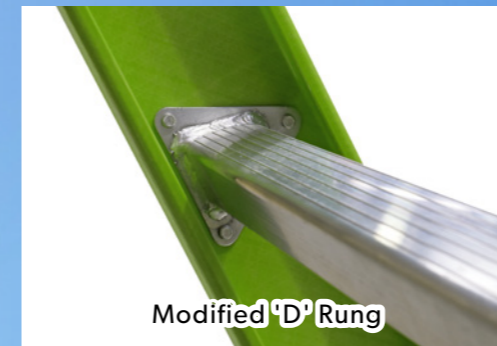
- All ropes and pulleys
- Rungs
- Head straps and fittings
- Sure-Set feet
- Levelling and climb angle bubbles
- Rung lock system
- SumoStance legs
- Rating/Approval labels
- Stiles



Secure Set feet



Audible Ground Cue



Modified 'D' Rung





**hauff
technik**

HSI 150 WALL INSERTS

With a nominal diameter of 150 mm, the Hauff Technik HSI 150 is setting standards for cable entries for installation in concrete walls flush. It is delivered fitted with a pressure-tight closing cover as standard. Various closed or split system seals can be supplied for sealing cables depending on requirements.

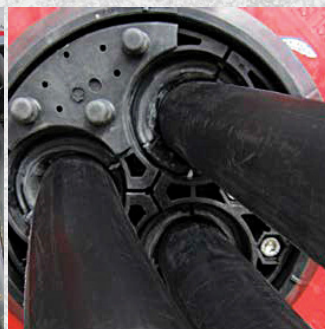
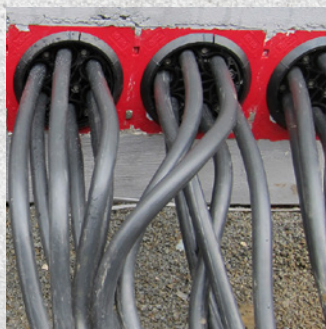
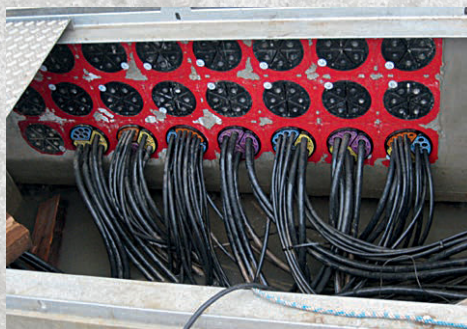
Hauff-Technik also offers the KES-M 150 pressure-tight cable entry system, which is compatible with the HSI 150 system. Featuring a Hateflex spiral hose and supporting various options for cable sealing, this system can be relied upon to provide optimum protection for the cables that are being laid.



HSI150 & HSI90 wall inserts mounted in formwork

Hateflex flexible conduit 5.3m lengths

HSI150 & HSI90 wall inserts mounted in formwork



SEGMENTO SEGMENTED SYSTEM

The Technogel used in SEGMENTO is a particularly gentle way of sealing cables. Four segments with an application range of 5 - 31 mm are available, which can be mounted in any combination in the system cover. Retrofitting is very straightforward. All segments are supplied with plugs. A typical use is sealing signal, data and control cables.

The system cover HSI150 DG is installed after the cable has been laid. This means that the full cross section of the cable entry is available for laying cables. An adapter ring, which is also split, ensures an optimum sealing fit.



**FIND
OUT
MORE**

HSI 150 DG SPLIT SYSTEM COVER



BIG PERFORMANCE SMALL PACKAGE

STURDILITE E-DC SERIES



LOW-VOLTAGE LED FLOODLIGHTS

Phoenix's renowned Sturdilite® line is a durable, economic LED option for DC applications. The E-DC Series offers two wattage options delivering up to 7100 lumens.

FEATURES

- Durable & economic vibration-resistant LED fixtures
- Lightweight, compact design
- Spot and flood optics minimize glare & provide precise optical control
- LED technology increases efficiency, eliminates maintenance & supports green initiatives

APPLICATIONS

- Fault response vehicles
- Industry
 - Utilities
 - Mines
 - Ports
 - Roading
 - Construction
 - Agriculture

We can assist with lighting designs to retrofit your equipment to LED lighting.

CAT NO.

PHX-E-56*

PHX-E-90*

Wattage	56	90
Effective Lumens	UP TO 4500	UP TO 7100
IP Rating	IP69K	
Shock	65G ALONG 3 AXES	
Vibration	5 GRMS 100-2200HZ ALONG 3 AXES	
Salt Spray	TESTED TO ASTM B117 FOR 1000 HOURS	
Construction	DIE CAST ALUMINIUM HOUSING WITH BLACK POWDER COAT	
Hardware	STAINLESS STEEL BRACKET	
Weight (kg)	1.9	3.2
Dimensions incl. bracket (mm)	162W x 138H x 89D	189W x 167H x 108D

*Add suffix -SP for spotlight or -FL for floodlight

PHOENIX
DURABILITY X DESIGN™

e ECO
LIGHT



HIGH ACCURACY CURRENT & VOLTAGE SENSORS

The dynamics of the traditional grid are changing significantly.

Initiatives such as distributed energy resources (DERs) and optimizing energy efficiency & resiliency are driving a need for high precision sensing technologies that can effectively monitor the state of the modern grid. G&W Electric's sensor technology provides various solutions with its customizable, high precision low power instrument transformers (LPITs).

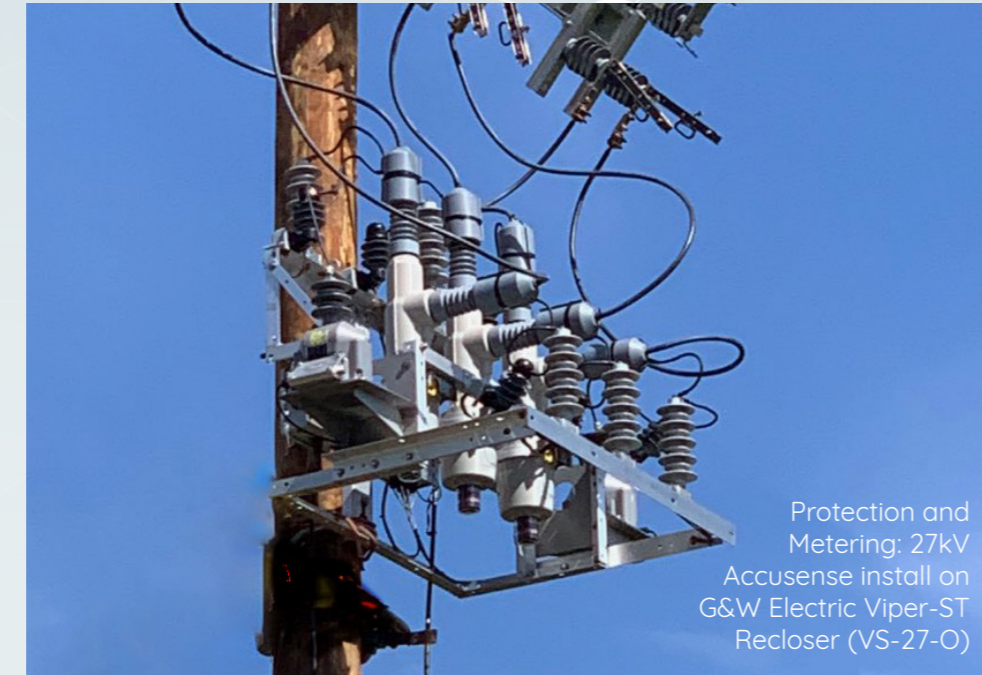
G&W Electric's voltage sensing technology is a high accuracy, temperature compensated capacitive divider with high frequency measurement bandwidth. The galvanic isolation of the capacitive technology and the low-power outputs provide a safe solution for equipment operators.

FEATURES AND BENEFITS

- Versatility with one sensor for metering and protection applications
- High accuracy up to 0.5 class over the temperature range
- High frequency measurement bandwidth
- Safety with low energy outputs and galvanic isolation from primary
- Light-weight, compact size for easy installation and retrofits
- Reliability with no ferro resonance
- Utilises Rogowski coils
- No hazardous secondary voltages in the event of open secondary circuit

APPLICATIONS

- Designed to cover a wide range of applications from metering-class measurements & analytics to protection.
- Assists in making critical decisions for optimizing the grid



Protection and Metering: 27kV Accusense install on G&W Electric Viper-ST Recloser (VS-27-O)

- Can be integrated with protection equipment, enabling grid reliability and resilience.
- Wide frequency measurement bandwidth can be utilized to detect harmonics issues as well as high frequencies associated with partial discharge.

VERSATILE PROTECTION & METERING

- Factory integrated Viper recloser & Accusense sensor solution
 - Protection & power quality measurements in one device
 - DER point of common coupling solution (IEEE 1547)
- Retrofit reclosers and switches in the field
 - Current & voltage monitoring for protection and metering
 - Fault location, isolation, service restoration (FLISR)

DER AND MICROGRID

- Monitor DER interconnections with precision and no ferro resonance

- Detect harmonics issues with wide bandwidth voltage sensors
- Monitor grid stability with high accuracy voltage sensors
- Monitor dynamic system loads with Rogowski current sensing

OTHER GRID SOLUTIONS

- Compact, lightweight alternative to inductive transformers
 - Stand-alone, high accuracy voltage & current measurement
 - Substation metering
 - End of line, mid-point, critical load metering
- Retrofit capacitor banks
- Volt-VAR Optimization (VVO) power quality initiatives
- Conservation Voltage Reduction (CVR) to reduce peak demand, line losses, carbon emissions
- Partial discharge measurements for checking system integrity

OUTDOOR SOLUTIONS

G&W Electric's sensors are suitable for installation in pole-mounted and substation applications and are available as a voltage only (VS) or a combination current voltage sensor (CVS).

- Typically mounted on reclosers, switches or as a stand alone unit
- Options available for high accuracy voltage measurement over a large frequency band (wide band - WB option)

- Options available for high frequency measurement with class 1 accuracy from 20Hz-300kHz and class 5 accuracy up to 1MHz for fault location and partial discharge application (high frequency - HF option)



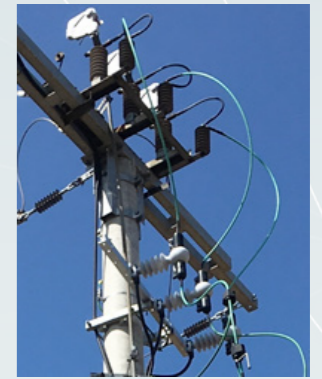
38kV Accusense Voltage Sensor (VS-38-O)



Stand alone Accusense® Voltage Metering System



Combination current and voltage sensor (CVS-24-O)



Installation in airbreak switch application (CVS-24-O)

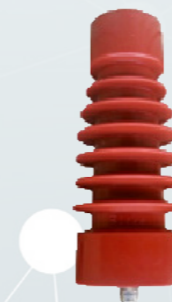
INDOOR SOLUTIONS

G&W Electric's sensors are suitable for installation in air or SF6 insulated switchgear and are available as a voltage only (VS) or a combination current voltage sensor (CVS).

- Available with optional additional output for voltage presence indication
- Options available for high accuracy voltage measurement over a large frequency band (wide band - WB option)

- Options available for high frequency measurement with class 1 accuracy from 20Hz-300kHz and class 5 accuracy up to 1MHz for fault location and partial discharge applications (high frequency - HF option)

- Typically mounted on copper busbars replacing post insulators



24kV Voltage Sensor (VS-24-I)



24kV Voltage Sensor installed in switchgear application



Combination Current and Voltage Sensor (CVS-24-I)



Voltage Sensor (VS-24-I - top) & Current Voltage Sensor (CVS-24-I- bottom) installed in switchgear application



Combination current voltage sensor in a pole-top switch retrofit application (CVS-24-O)

G&W
Engineered to order. Built to last.

NEW AND IMPROVED

Independent Earth Spike & Reel



Auckland

78 Cryers Road
East Tamaki
Auckland
NEW ZEALAND
Ph 0800 442 182
PO Box 39 383
Howick, Auckland

Wellington

10 Petone Ave
Petone
Wellington
NEW ZEALAND
Ph 04 576 2530
PO Box 39 383
Howick, Auckland
NEW ZEALAND
sales@transnet.co.nz

TransNet Tonga

Nuku'alofa
Lakalakaimonu Multi Utility
Complex
Taufa'ahau Road
Poutaha
Nuku'alofa
TONGA
Ph +67 627 939
PO Box 2932
Nuku'alofa
TONGA
transnet@kalianet.to

We've taken the IET15M to the next level.

This reel and spike is designed to attach to any voltage tester. It boasts 15m of lead and a sturdy spike to easily pierce even the hardest ground. The T handle ensures the tester cable is protected if force is required when penetrating hard ground.

Simple to use, the Independent Earth Tester Reel and Spike has a connection point on the end of the lead to simply poke the tester probe into. The beauty of this set up is if your tester or lead fails you can easily replace them without having to replace the entire unit.

The spring operated bearing on the reel makes winding the lead user friendly and easy without twists and tangles.

KEY FEATURES

1. Sturdy Stainless Steel spike with 'T' handle
2. 15m green/yellow lead
3. Universal tester connection point (Tester sold separately)
4. Spring and bearing to help wind cable back in without twists & tangles
5. Comes tested & tagged for immediate use

CAT NO. IET15M



TransNet NZ Ltd has made every reasonable effort to ensure the accuracy of this information and it is to the best of our knowledge correct and reliable. Under no circumstances does this constitute an assurance of any particular quality or performance and users should independently evaluate the suitability of products for their desired application. All information in this publication including pricing, drawings, illustrations, images and graphic designs are reflections of our current understanding. TransNet NZ Ltd reserves the right to make any adjustment to this information at any time. Our liability for the products outlined in this publication is set forth in our standard terms and conditions of trade. In case of any potential ambiguities or questions, please contact us for clarification.

